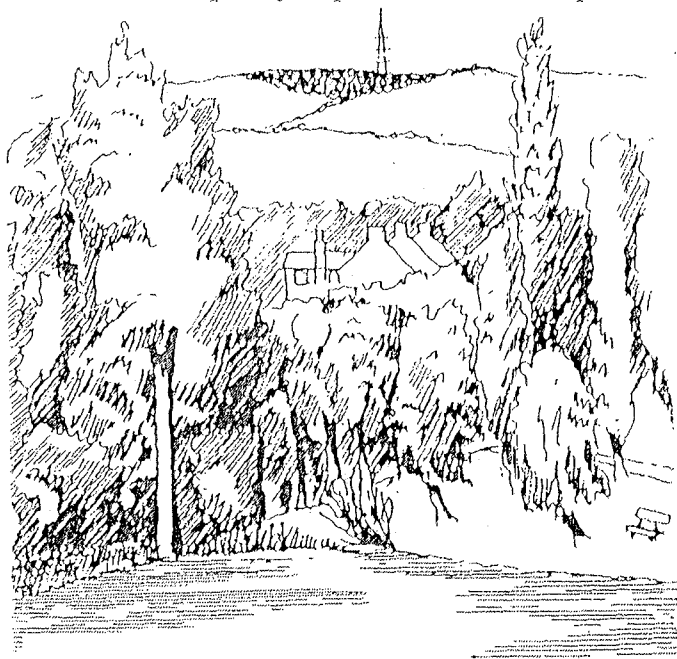


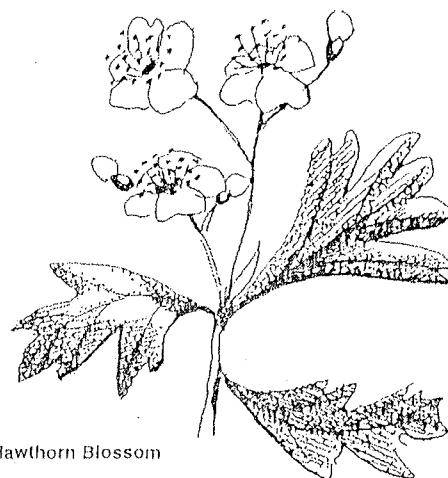
4. Keep straight on this path with the white painted Bridge Inn coming into view and the mast at Grenoside straight above it on the horizon. Just before reaching the Bridge Inn there is a level grass area at the side of the brook which is ideal on a nice day for a rest.

5. The Bridge Inn is situated at the halfway stage of the walk and a fitting refreshment stop at opening times. From the Bridge Inn, retrace your steps back along the footpath with the dam now on the right. There is another flat grassed area on your left. Look in the far corner you will see a stone stile leading to some stone houses. These houses were adapted from the farmhouse and buildings of Charlton Brook Dam. Just over the stile is a stone water feature. Could it be an old trough? As you proceed back along the path do not go to the right at the railed dam water outlet, but keep straight on.

6. Keep on this path all the way back. Note the snakey course of the brook, many mature trees making beautiful features by the brook and in the open grassed areas. Go past the children's playground on the left (erected 2001) and if needed there's plenty of places to rest and picnic.



Charlton Brook Dam



Hawthorn Blossom

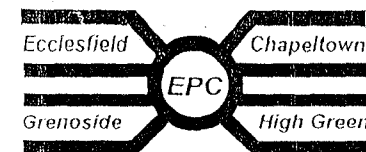
### COUNTRY CODE

#### **WHEN IN THE COUNTRYSIDE - REMEMBER:**

GUARD AGAINST ALL RISK OF FIRE  
 FASTEN ALL GATES  
 KEEP DOGS UNDER PROPER CONTROL  
 KEEP TO PATHS ACROSS FARMLAND  
 AVOID DAMAGING FENCES, HEDGES AND WALLS  
 DO NOT LEAVE LITTER  
 SAFEGUARD WATER SUPPLIES  
 PROTECT WILDLIFE, WILD PLANTS AND TREES.  
 WALK CAREFULLY ON COUNTRY ROADS  
 RESPECT THE LIFE OF THE COUNTRYSIDE

#### **Acknowledgements:**

Ecclesfield Parish Council thank all concerned in suggesting this walk for your enjoyment. Times stated are for average walkers, but many will be tempted to take longer to experience the wide variety of seasonal wildlife, and develop interest in the rich history of this area. There are groups and individuals in the parish who can help with information about things you see on the walks. Ecclesfield Parish Council will advise where possible, and Sheffield City Council has various departments specialising in, and with responsibility for many environmental, planning and countryside issues.



*Serving the Community*

**Ecclesfield Parish Council**

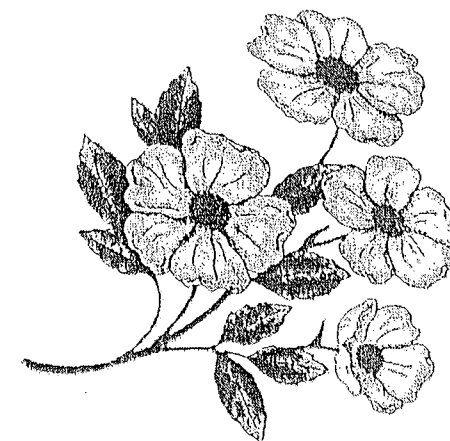
## **WALKS AROUND THE PARISH**

**NO. 4**

### **CHARLTON BROOK WALK**

Original walk by David Dickenson  
 Updated by Bill Ward Summer 2002

**Ecclesfield Parish Council**



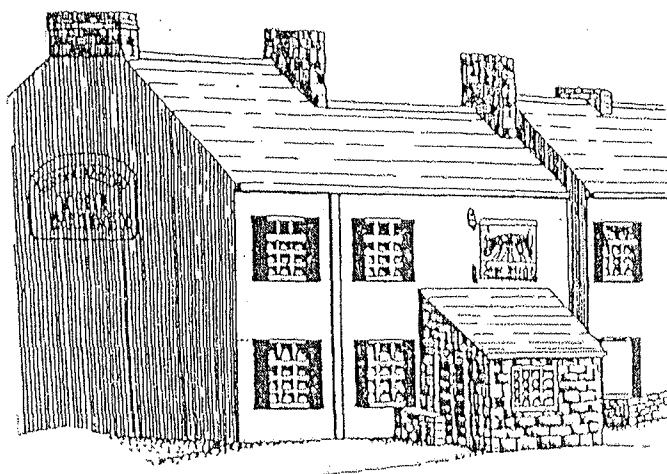
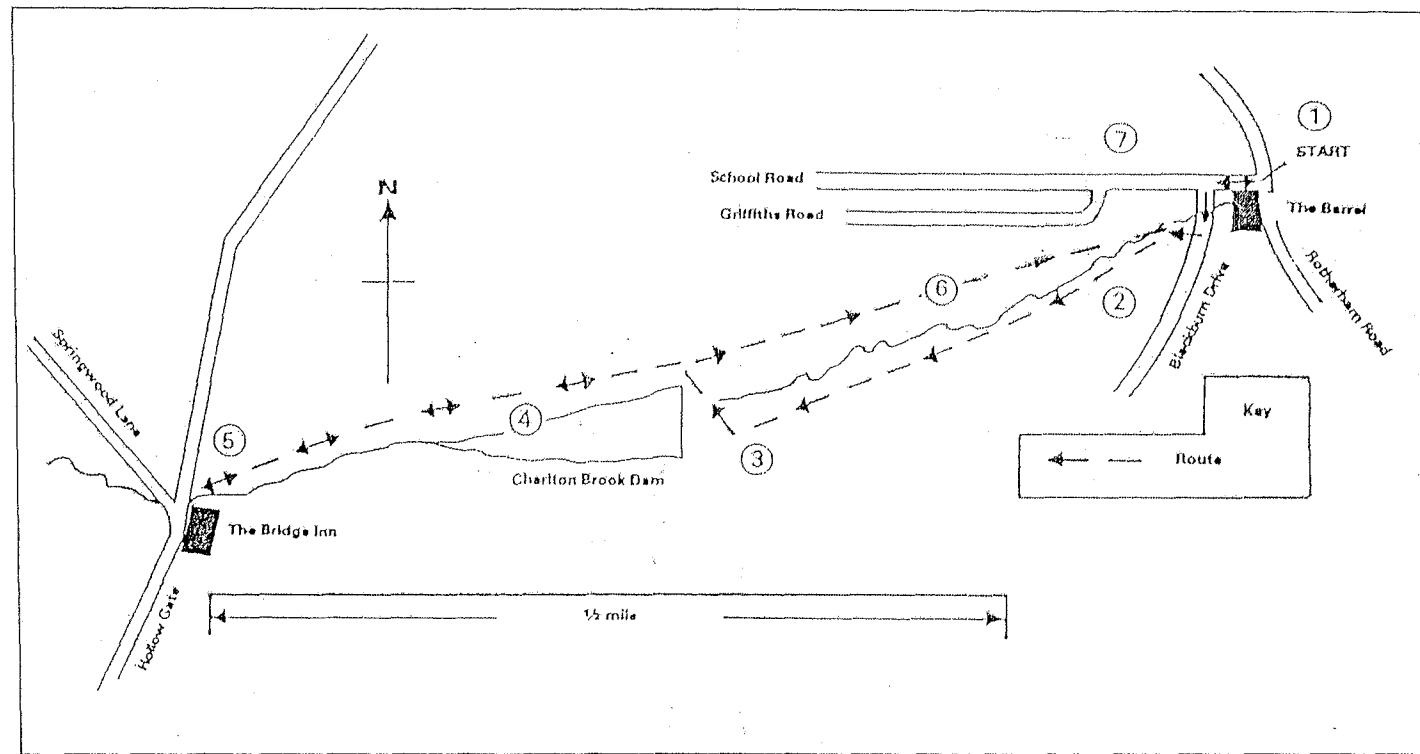
Ecclesfield Parish Council  
 Council Offices, Mortomley Lane, High Green, Sheffield,  
 S35 3HS  
 Tel:- 0114 2845095/2844771  
 e:mail ecclesfieldPC@aol.com

BOOTS OR STOUT SHOES ARE  
RECOMMENDED FOR THIS WALK

**DISTANCE:** 1 miles ( hour)  
**STARTING POINTS:** The Barrel Inn Public  
House, Lane End,  
Chapeltown  
**GRID REFERENCE:** SK350968

**BRIEF DESCRIPTION:**

This is short walk through a well-used recreational wooded area. Houses are nearby throughout, but their close proximity does not detract from the pleasant natural atmosphere where birds are abundant. All walking is on proper paths, with no stiles or similar obstructions. The walk is very easy and it would make a pleasant stroll. Look for interesting natural and historical features. Where does Charlton Brook come from? Where does it go?



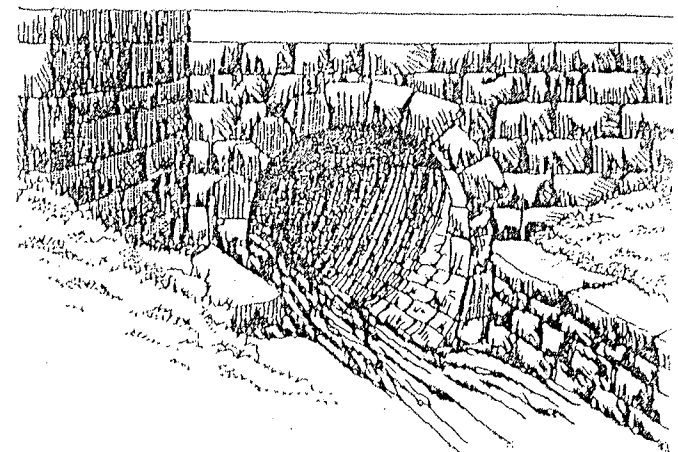
The Bridge Inn

**ROUTE INSTRUCTIONS:**

1. Leave The Barrel Public House and walk along School Road and turn first left into Blackburn Drive. Some 50 yards along turn sharp right onto a marked footpath, then sharp left before the small bridge over the brook.

2. Continue along this footpath with the hawthorn bushes and Charlton Brook on the right. Blackburn Drive continues round on your left beyond the open grassed area. This part of the walk is particularly beautiful in Spring when the hawthorns are covered in white blossom, spring flowers are on display and the birds chattering to you as you walk along. There are good views on this stretch of the walk of the Grenoside woodlands on the distant hills.

3. After some time, the path passes close to some houses on the left and a few yards further on descends slightly. Continue down the path and down half a dozen steps with the reservoir now in view on your left. (It can be a bit muddy here). Pass along the path between the dam and the small stone bridge on the right. The path then rises onto the good surface of the Trans Pennine Trail. Go left.



Water outlet Charlson Brook Dam